

BRUCE MATHER

INDEPENDENT ESTATE AGENT

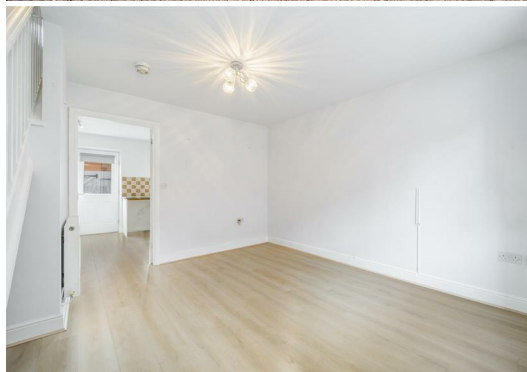


4E White Horse Mews, Boston, PE21 8SZ

Asking Price £139,000

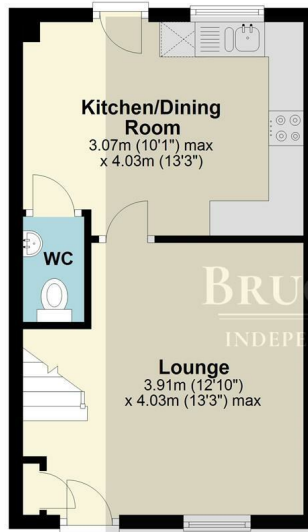
A delightful mews style two bedroom, end of terrace home, in good condition with parking directly in front, located in a quiet residential area in the centre of town. Two bedrooms and a bathroom upstairs off the landing downstairs is a reception to the front and a modern kitchen /diner to the rear with a patio door to the gravelled garden. A really neat home for a first-time buyer or rental investor located in Boston with all the schools, shops and amenities on your doorstep. Please call Bruce Mather Estate Agents to arrange a viewing on 01205365032.

- Little Mews style house
- Central Location
- End of terrace



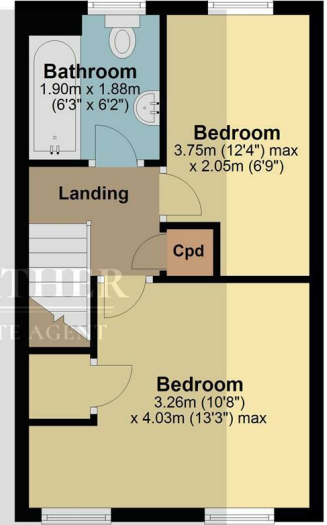
Ground Floor

Approx. 28.5 sq. metres (307.1 sq. feet)



First Floor

Approx. 28.2 sq. metres (304.0 sq. feet)

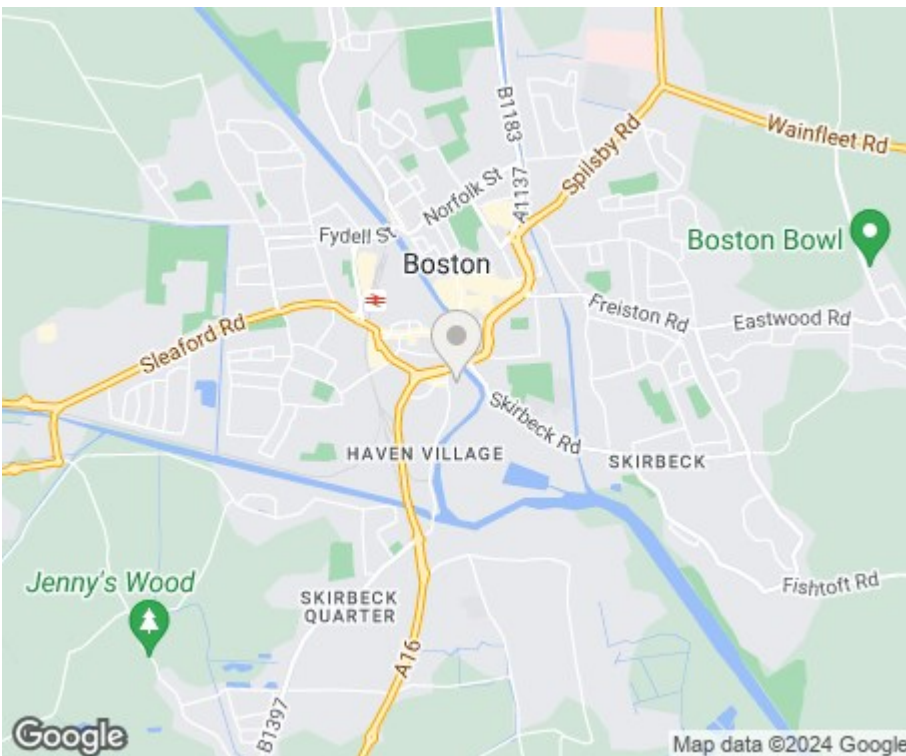
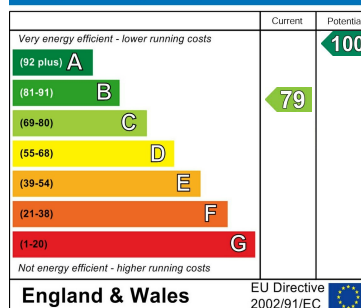


Total area: approx. 56.8 sq. metres (611.1 sq. feet)

All images used are for illustrative purposes. Images are for guidance only and may not necessarily represent a true and accurate depiction of the condition of property. Floor plans are intended to give an indication of the layout only. All images, floor plans and dimensions are not intended to form part any contract.

Plan produced using PlanUp.

Energy Efficiency Rating



These particulars, whilst believed to be accurate are set out as a general outline only for guidance and do not constitute any part of an offer or contract. Intending purchasers should not rely on them as statements of representation of fact, but must satisfy themselves by inspection or otherwise as to their accuracy. No person in this firm's employment has the authority to make or give any representation or warranty in respect of the property.

6 Pump Square, Boston, Lincs, PE21 6QW

Tel: 01205 360 387 Email: sales@brucemather.co.uk brucemather.co.uk